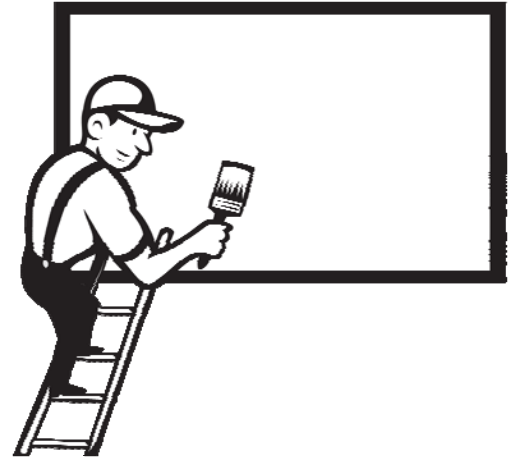


Ratio Equation Step-by-Step Lesson

George's job requires him to paint 3 walls at every office he visits.

This can be expressed as: $O \times 3 = W$



If O = the number of offices that George visits and W = the number of walls that George paints, find the total number of walls that George would paint if he visited 14 offices.

Solution:

1) Identify what you are being asked.

We are asked to "find the total number of walls that George would paint if he visited 14 offices."

2) Understand the equation: $O \times 3 = W$

↑ ↑
of offices # of walls painted

3) We know that George visits (14 offices). We just plug that ($O = 14$) into the equation.

$$14 \times 3 = W$$

$$42 = W$$

This means that George paints 42 walls.