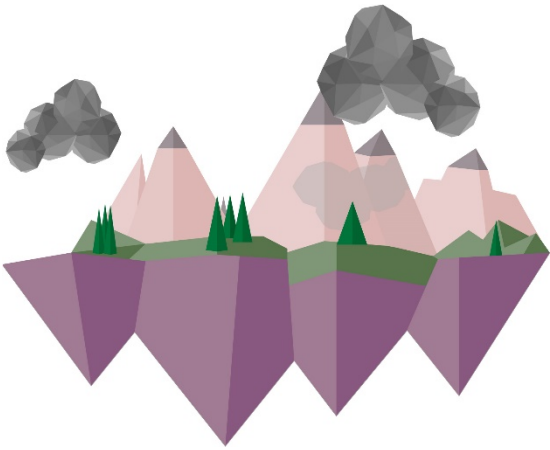


Name: _____

Score: _____

Factorization Worksheet 1



You multiply **factors** together to get another number.

Prime numbers are the numbers that have only two **factors**.

What are the factors of 2? 1 and 2

Because 2 has only two **factors**, it is a **prime number**.

Composite numbers are the numbers that have more than two **factors**.

What are the factors of 8? 1, 2, 4, and 8

Because 8 has more than two factors, it is a **composite number**.

Circle the correct answer.

1. The lowest factor of 75 is

15 9 25 none of the above

2. Each number has exactly ____ factors.

3 4 2 none of the above

3. The composite number with exactly 5 factors.

16 36 44 none of the above

4. The number 57 is

Prime Composite Neither prime nor composite

5. The only number that is both even and prime is

3 2 4 none of the above

6. The number 35 is

Prime Composite Neither prime nor composite

7. The lowest listed factor of 48 is

16 5 6 none of the above

8. The succeeding prime number of 75 is

79 83 95 none of the above