

Name _____

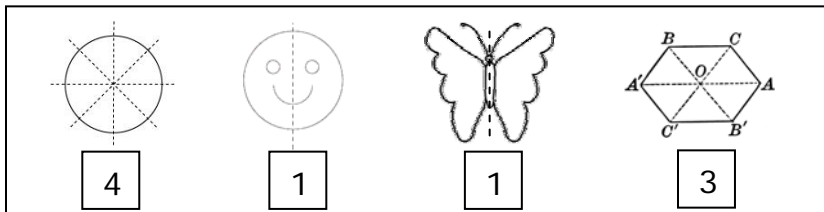
Date _____

Symmetry - Guided Lesson Explanation

Explanation#1

This one is a cinch because the lines of symmetry are already drawn for us. We have to identify how many lines of symmetry we see for each image. So we will count the lines that form symmetry.

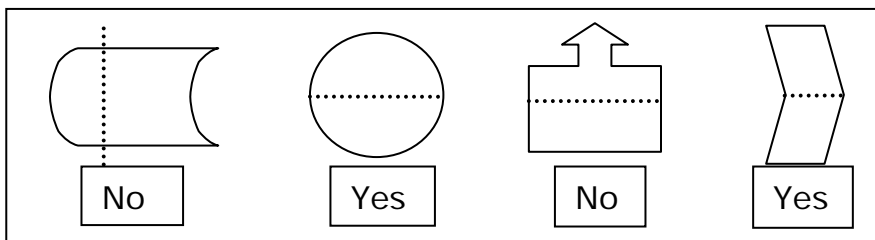
So, the answers are:



Explanation#2

As we know that symmetry is when one shape becomes exactly like another if you flip, slide or turn it.

Now we can see that there are some lines through which some images are not same. Ask yourself if you could fold the object directly onto itself and have it be equal.



Name _____

Date _____

Explanation#3

We have to draw the lines through which we can show the symmetry of the images.

So, the answers are:

