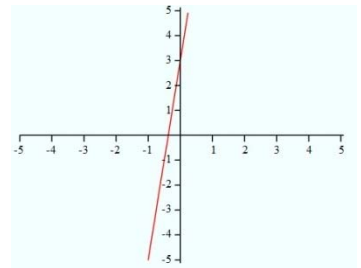


Manipulating the Graphs of Functions - Matching Worksheet

Write the letter of the answer that matches the problem.

- _____ 1. The function $y = 14x - 3$, which statement best describes the effect of increasing the y-intercept by 9?
 a) The new line is parallel to the original.
 b) The new line has greater rate of change.

a. a)



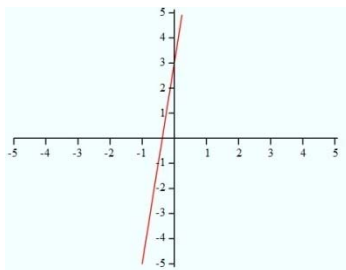
- _____ 2. Which statement best describes the effect on the graph of $f(x) = 5x - 9$ if the y intercept is changed to + 15?
 a) The slope does not change.
 b) The new line passes through the origin.

- b. a) Yes, the new line is parallel to the original.
 b) Both lines are parallel so the change will be the same.

- _____ 3. The graph of a line that contains the points $(-2, -5)$ and $(1, 7)$ is shown below. Which best represents this line if the slope is doubled and the y-intercept remains constant?

- c. a) Both lines are parallel, so the slope is the same.
 b) No, the lines does not touch the origin $(0,0)$

a)



b)

