

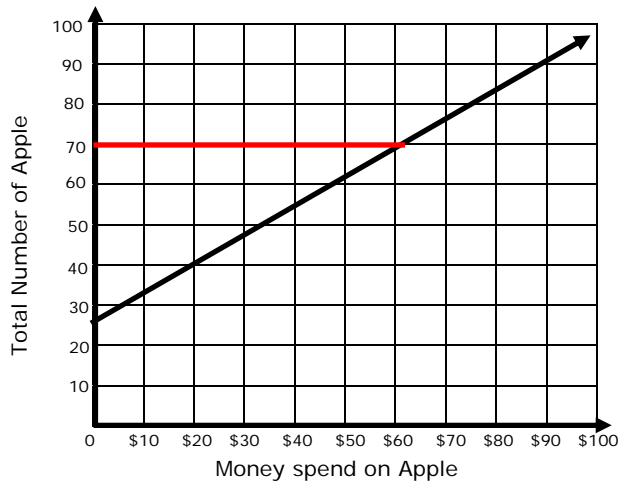
Name _____

Date _____

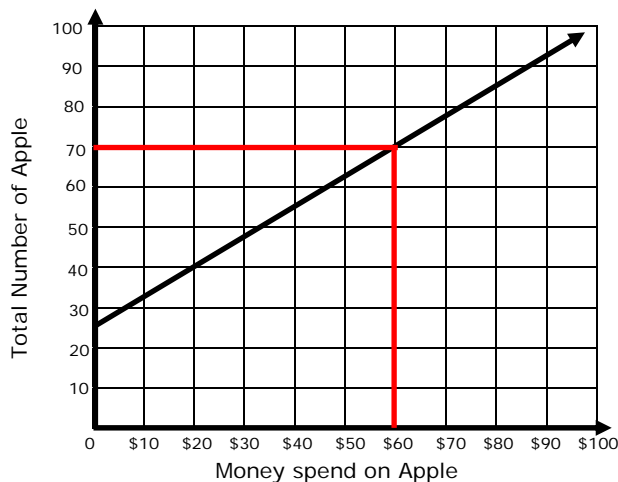
Using Graphs of Equations - Guided Lesson Explanation

Explanation#1

Find 70 apples on the y-axis. Move right until you intersect the graph.



Now move down until you intersect the x-axis.



You intersect the x -axis at \$60. To have a total of 70 apples in her collection, Emma needs to spend \$60 on apples.

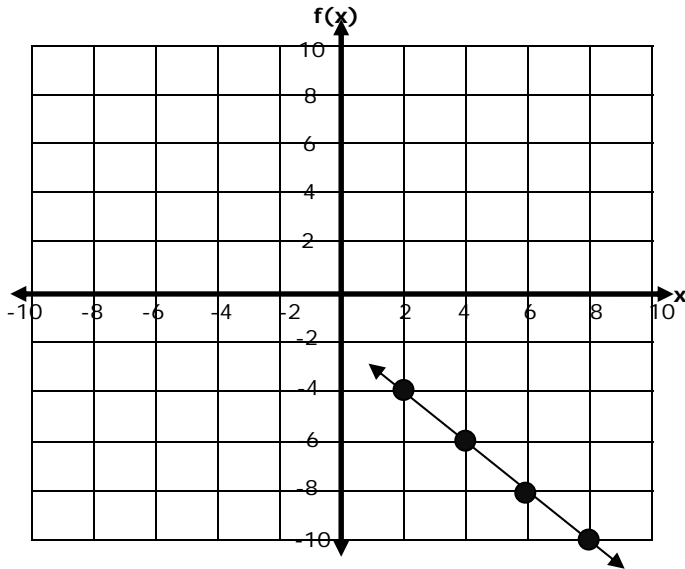


Name _____

Date _____

Explanation#2

We can graph a function by plotting ordered pairs.



The graph of the function is the straight line connecting the points.

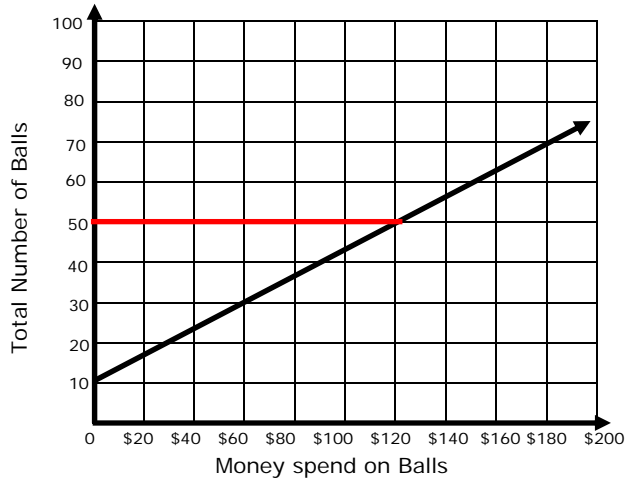


Name _____

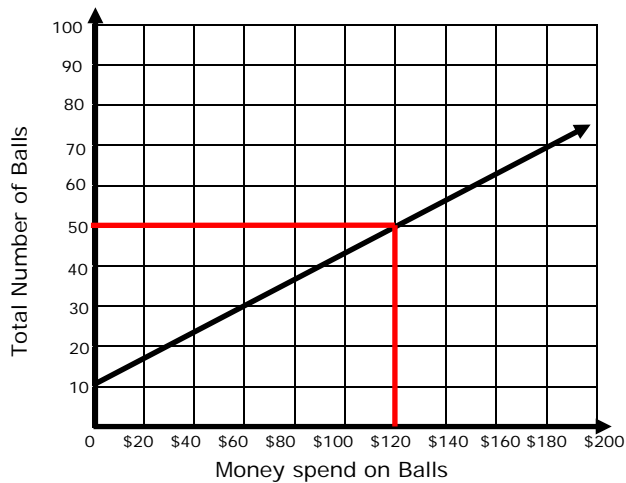
Date _____

Explanation#3

Find 50 balls on the y -axis. Move right until you intersect the graph



Now move down until you intersect the x -axis.



Now move down until you intersect the x -axis.

You intersect the x -axis at \$120. To have a total of 50 balls in his collection, Scott needs to spend \$120 on balls.

