

Analyzing Functional Relationships by Graphing - Independent Practice

Complete all the problems.

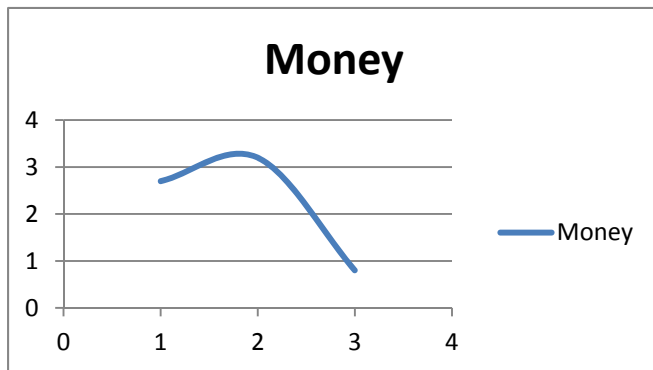
1. Michael is going to the playground. First, he walks to church. He stays there for few minutes. Then he hires a taxi to drive him to the playground. The taxi stops at a coffee shop and then the playground. Draw the graph representing Michael's trip to the playground.

2. Describe the graph of the function. Is this linear or non-linear?

x	1	2	3	4	5
y	5	10	15	20	25

3. Describe the graph of the function between $y = 2$ and $y = 4$.

4. Describe the graph of the function. Is this relationship non-linear?



5. Isabella is a plumber. She walks to the market. She buys some tools and stays there a few minutes. Then she hires a taxi to go to Sarah's house. After Sarah's she takes the taxi to Olivia's house. Draw the graph representing Isabella's trip to Olivia's house.

6. Describe the graph of the function. Is this linear or non-linear?

x	1	2	3	4	5
y	4	10	8	9	7



Name _____

Date _____

7. Describe the graph of the function between $x = 3$ and $x = 4$.

8. Describe the graph of the function between $x = -4$ and $x = -2$.

9. Describe the graph of the function. Is this linear or non-linear.

x	1	2	3	4	5
y	20	16	12	8	4

10. Describe the graph of the function. Is this relationship linear?

