

Name \_\_\_\_\_

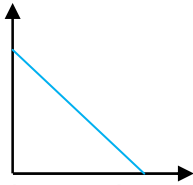
Date \_\_\_\_\_

## Equation of a Straight Line- Guided Lesson Explanation

### Explanation#1

**Linear-** The equation must fit into the  $y = mx + b$  format. The equation variables cannot have exponents. When graphed they form straight lines.

**Non-linear-** These equations do not graph as a straight line.



The graph of a linear function is a straight line. So, graph 1 is linear function.

### Explanation#2

The range of change is constant so the graph shows a straight line. Straight lines = linear equations.

So, it is a linear.

### Explanation#3

We know that if the constant of variation is the same in x and y then it makes a straight line graph. This does just that.

So, this is a linear.

