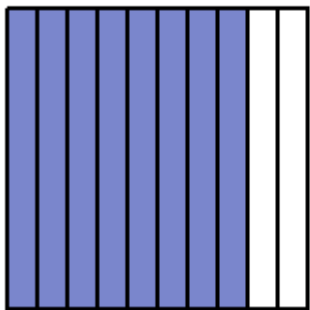


## Visualizing Decimals



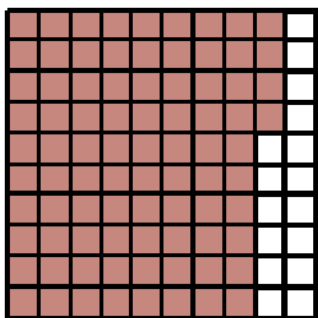
You can visualize decimals by coloring a figure to understand the value of the decimal.

What decimal number is illustrated?

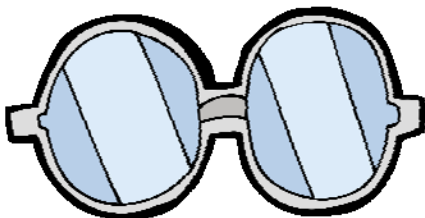


This figure is broken down into 10 equal units. Eight of those units are colored, so the portion of this figure that is colored is  $\frac{8}{10}$  or 0.8

What decimal is illustrated?



This figure is broken down into a 100 equal units. Eighty-four of those units are colored, so the portion of this figure that is colored is  $\frac{84}{100}$  or 0.84



Hint: For numbers that are placed over 10 will result in that number being placed in the tenths place. Ex.  $\frac{6}{10} = 0.6$

For numbers that are placed over 100 will result in that number ending in the hundredths place.

Ex.  $\frac{45}{100} = 0.45$