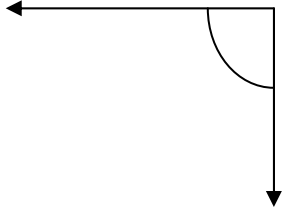


Identify and Classifying Angles- Guided Lesson

Complete the following problems:

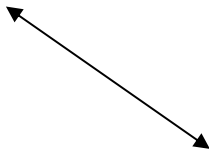
1. Is this angle acute, right, obtuse, or straight?



- a) acute
- c) obtuse

- b) right
- d) straight

2. What is this?



- a) a line
- c) a ray

- b) a line segment

3. Label each line set as parallel, perpendicular, or intersecting.

