

Name _____

Date _____

Identify and Classifying Angles - Guided Lesson Explanation

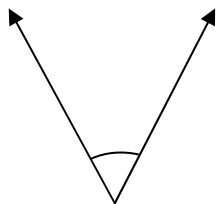
Explanation to #1

An acute angle is less than 90° .

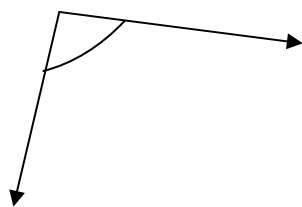
A right angle measures exactly 90° .

An obtuse angle measures more than 90° , but less than 180° .

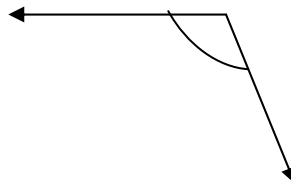
A straight angle measures exactly 180° .



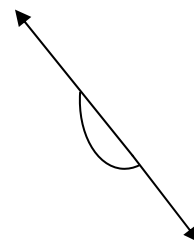
Acute



right

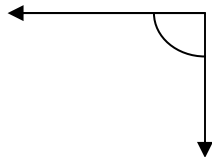


obtuse



straight

Look at this angle:



This angle measures exactly 90° . This angle is a right angle.



Name _____

Date _____

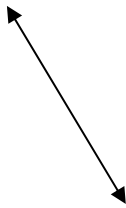
Explanation to #2

A line goes without end in both directions.

A ray has 1 endpoint and goes without end in 1 direction.

A line segment has 2 endpoints.

Now look at this figure:



This is a line. It has no endpoints.

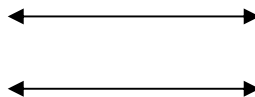
Explanation to #3

Parallel lines are lines in the same plane that can continue infinitely, but do not intersect. If you check any point on parallel lines, they are always the same distance apart at any given point.

Intersecting lines meet or cross one another at some point.

Perpendicular lines are intersecting, but they meet at right angles. As a result, they are perpendicular.

a) Look at this figure



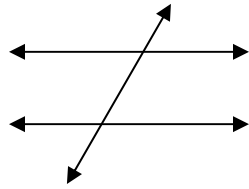
In this figure, both lines are in same plane, are not meeting at any point and are at same distance so they are parallel lines.



Name _____

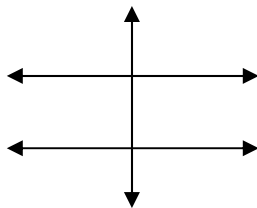
Date _____

b) Look at the given figure



As it can be clearly seen, the lines intersect. The vertical line is crossing through two horizontal lines, so they are intersecting.

c) Observe the figure carefully



The vertical line is crossing or meeting both horizontal lines at right angles or 90° . This figure contains perpendicular lines.

So the answer is perpendicular lines.

